

# FLOW Ingest



## 4 Channel and 8 Channel SD/HD Ingest

The FLOW Ingest platform provides flexible and robust ingest capabilities for a wide range of media production operations, from capturing multi-feed live sources with scheduling and VTR control, to busy file-based ingest teams who require a comprehensive, centralised media preparation tool set.

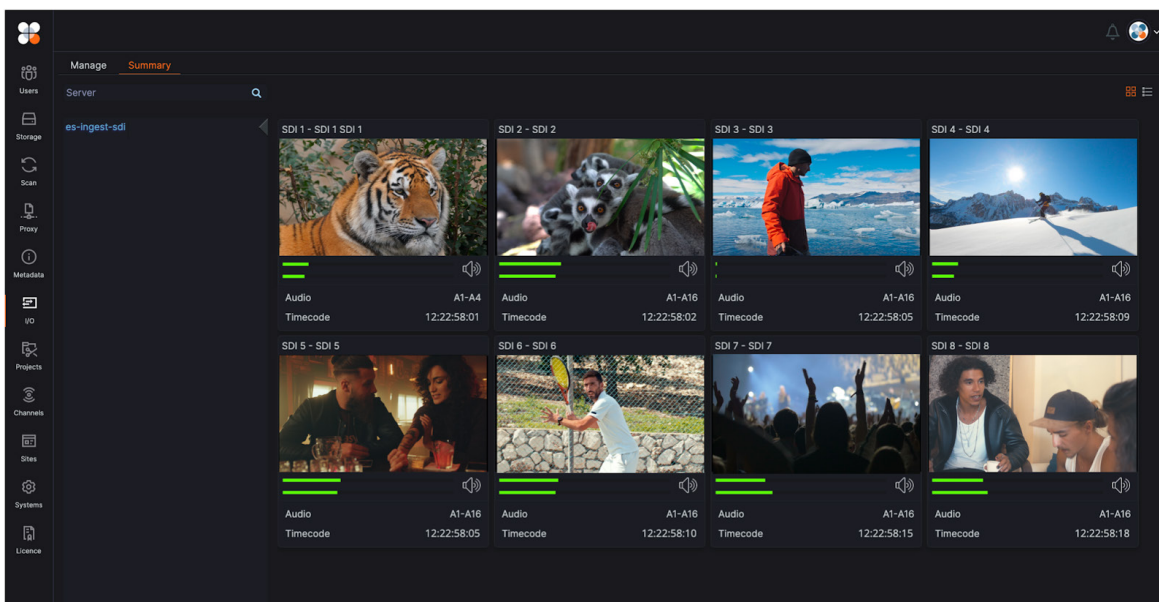
The core hardware platform comprises a powerful, compact 2RU server utilising the latest Intel Xeon CPUs. With Matrox I/O capture cards, FLOW Ingest provides an expanded channel count per server returning lower total cost per channel.

FLOW Ingest servers run the FLOW Ingest software role, which provides the capability for both file-based or baseband SDI ingest. FLOW SDI Ingest servers have the ability to use

their channels for file-based ingest when not recording from an SDI input.

FLOW Ingest is available in two models, one with 4 HD-SDI ports and one with 8 HD-SDI ports. Each HD-SDI port is configurable to serve as an input or a passthrough monitoring output, offering dynamic flexibility depending on the needs of the facility.

All popular industry-standard codecs, resolutions, and frame rates are supported for both input and output formats. Both models offer a full complement of ingest codecs, including DNxHD, ProRes 422, and XDCAM, and can capture 4 or 8 inputs in all codecs except AVC-Intra. Both models also come equipped with all the necessary I/O connections including AES audio and RS-422 deck control.



# Specifications

## Server Models

FLOW Ingest Server 4 Channel 2U	HPE based DL380 2U chassis, dual CPUs, 128 GB RAM with 4 ingest channels
FLOW Ingest Server 8 Channel 2U	HPE based DL380 2U chassis, dual CPUs, 128 GB RAM with 8 ingest channels

## Network Connectivity

Multiple Network Interface Cards Available (10, 25, 40, 50, 100 GbE Options)
Integrated HPE Intelligent Lights-out out-of-band management port

## Hardware

Form Factor	HPE ProLiant DL380 Gen10 2RU server chassis
Operating System	EditShare Linux
Motherboard	Dual-socket Intel Xeon platform
RAM	128 GB
CPU	Dual Intel Xeon CPU
Power Supply	920 W Redundant High-efficiency Platinum Level (94%+)
OS Drives	Standard Dual Mirrored 2.5" 320 GB SATA, Hot Swap/Rear Accessible
Operating Temperature Range	10 - 35°C (50° - 95°F)
Non-Operating Temperature Range	-30 - 60°C (-22° - 140°F)
Humidity Range	8 - 90% non-condensing
Non-Operating Humidity Range	5 - 95% non-condensing
Dimensions	8.73 x 44.54 x 73.02 x cm 3.44 x 17.54 x 28.75 in
Shipping Dimensions	27.00 x 60.02 x 96.85 cm 10.63 x 23.63 x 38.13 in
Weight	24.5 kg (54 lbs)

## Software

Standard Internal Video/Control I/O (4/8 Channel Model)
(4/8) HD-SDI/SD-SDI inputs (High Density BNC)
(1) Ref Video Input (mini BNC) - not required
(8/16) AES/EBU Digital Audio input channels (unbalanced BNC breakouts)
(4/8) LTC Timecode Inputs (BNC breakouts)
(4) RS-422 (Serial Deck Control)
(5/9) Included mini-BNC to N+BNC-F adapter cables
Input Voltage: 100 - 240 C+VAC
Input Frequency: 50/60 Hz